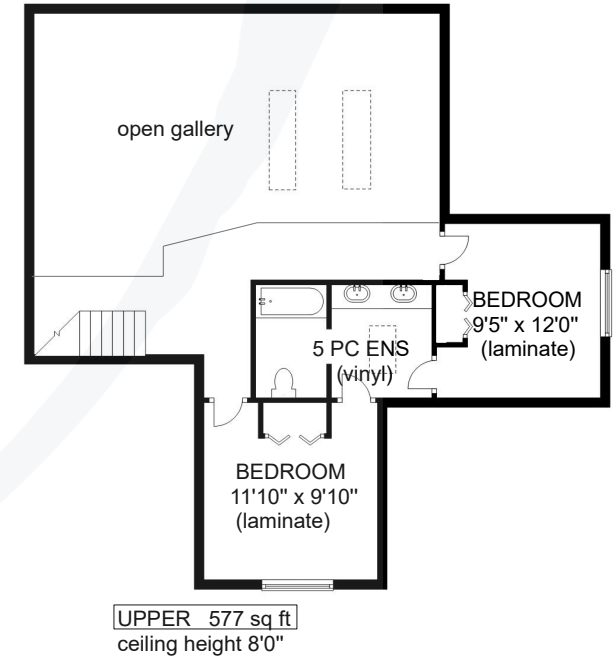
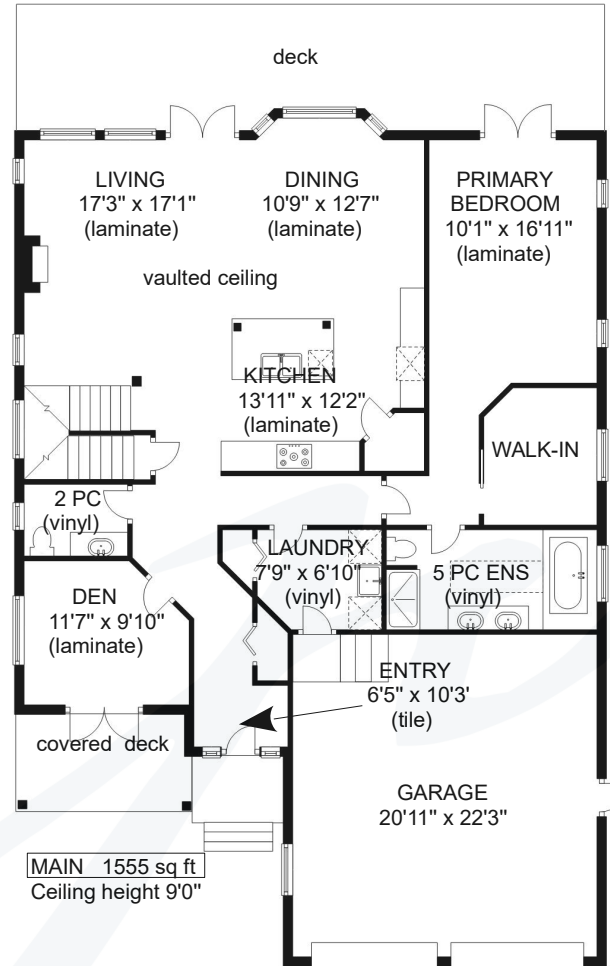
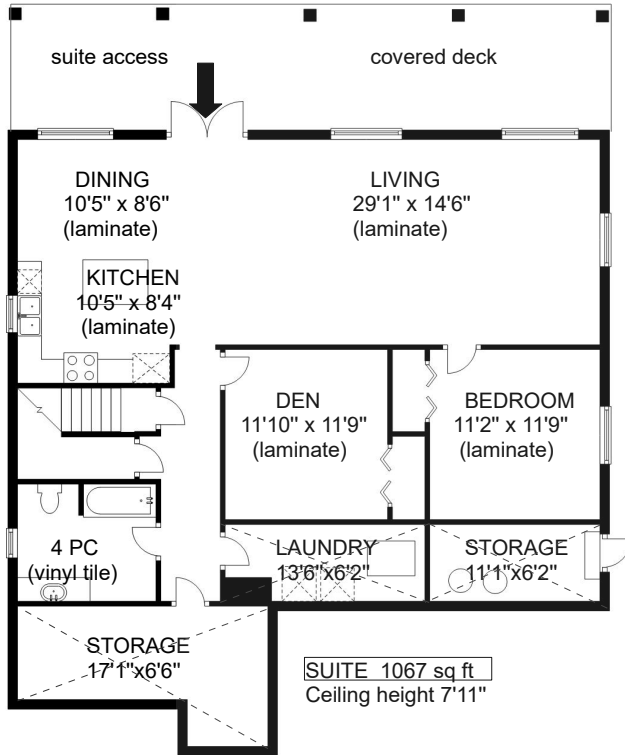
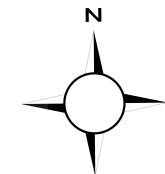


2696 RYDAL AVENUE



| | FINISHED SQ FT | UNFINISHED SQ FT | TOTAL SQ FT |
|--------|----------------|------------------|-------------|
| UPPER | 577 | 0 | 577 |
| MAIN | 1555 | 0 | 1555 |
| SUITE | 1067 | 300 | 1367 |
| TOTAL | 3199 | 300 | 3499 |
| GARAGE | 0 | 500 | 500 |



Prepared for the exclusive use of Jane Denham
RE/MAX Ocean Pacific Realty
250-898-1220

Measurements on the plans are intended for visual reference purposes only and should be verified

