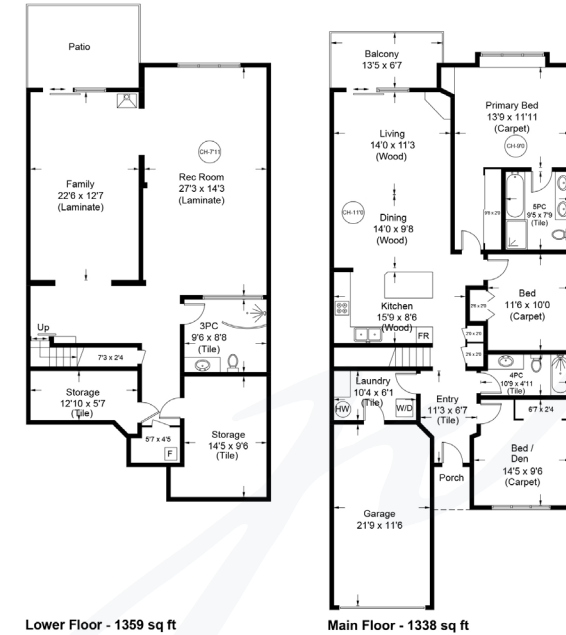




96-2001 Blue Jay Place



96-2001 Blue Jay Place
 Floor Area is calculated including the external walls (GEA).
 All measurements are approximate and the plan is for layout guidance only. Buyers should verify all measurements.

Floor	AREA (Sq. Ft.)		
	Finished	Unfinished	Garage
Lower	1359	0	0
Main	1338	0	272
Total	2697	0	272

Prepared for the exclusive use of Jane Denham
 RE/MAX Ocean Pacific Realty
 250-898-1220

LSPMedia



A Full Walk-Out Basement at The Woodlands...

A full WALK-OUT basement at The Woodlands, a premier townhome development built in 2007, close to shopping, golf, the new hospital and 5 min to the airport. This immaculate townhome with 2,697 sf, 3 BD/ 3 BA offers Acacia hardwood flooring, tile foyer, 9'-11' ceilings, and a luxurious ensuite with separate soaker tub and shower. A bright and spacious gourmet kitchen w/ maple shaker cabinets, overhead skylight, pantry, and large island with seating for your guests. The 11' vaulted ceiling in the Great room adds height to this comfortable plan with added warmth and ambience of the gas fireplace. On the lower level, the fully finished basement offers white oak laminate flooring over cork, for the dancer in you! A custom shower and spa-like bathroom, 2 family rooms, 3 storage rooms, cozy gas fireplace and sliding door access to the private patio. Follow the trails through the extensive greenway system & the adjacent Lerwick Forest. New roof 2021, Heat pump for A/C, Adult oriented, 2 pets.



96-2001 Blue Jay Place | Listed at \$715,000

MLS #: 923970 | 3 Bedrooms | 3 Bathrooms

Total SqFt: 2,697

Garages: 1

Year Built: 2007

Zoning: R-3

Strata Fees: \$601

Please use the link below for property photos & floor plan:

<https://www.janedenham.com/property/96-2001-blue-jay-place/>



c 250.898.1220
jane@janedenham.com
www.janedenham.com

Grace Denham-Clare
c 250.897.8890
grace@janedenham.com



RE/MAX[®]

ocean pacific realty

Each Office Independently Owned and Operated

b 250.339.2021
tf 888.829.7205
282 Anderton Rd.
Comox BC V9M 1Y2