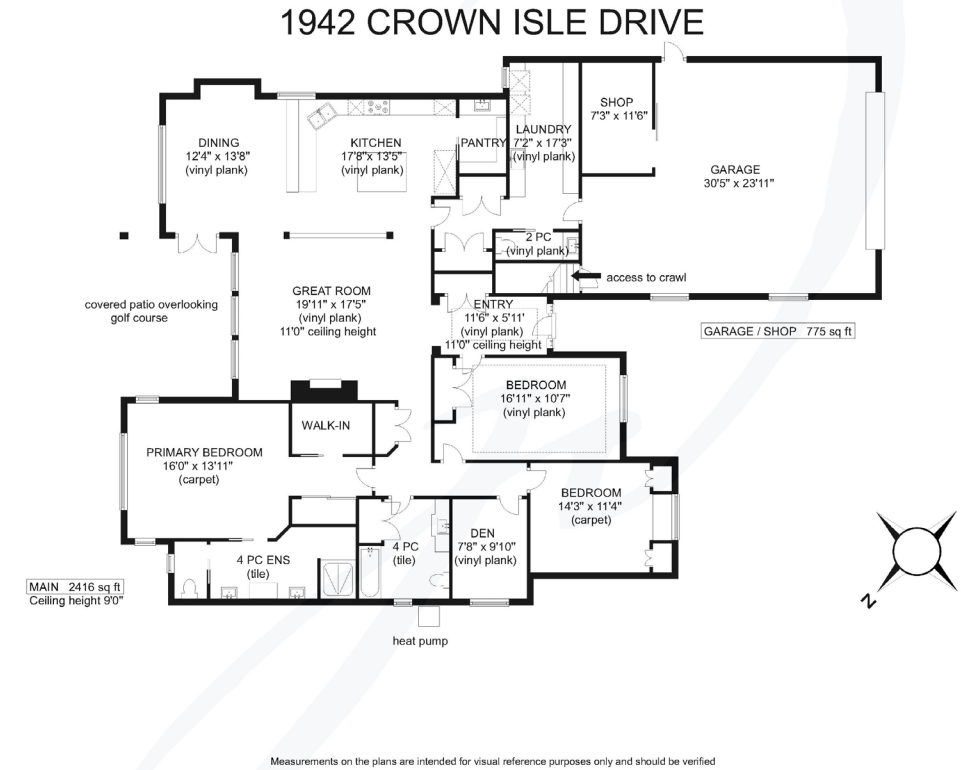


jane denham
REAL ESTATE GROUP



1942 Crown Isle Drive



Exquisite Crown Isle Rancher...

Exquisite Crown Isle rancher overlooking the 14th & 15th fairways, perfectly placed at the 15th tees with an 'out of bounds' buffer adding to the set back from the fairway. Custom designed and built by Benco in 2018, a luxury residence with 3 BD/ 3 BA, and 2,416 sf of exceptional living. An open concept perfect for entertaining, the kitchen is a chef's dream w/ Wolf induction cooktop & wall oven, Fisher/Paykel double fridge/freezer and 2 drawer dishwasher, baking/prep island & Butler's pantry. Great room with 11' coffered ceiling, linear gas fireplace w/ ledgestone, mantle and TV mount above. Spacious dining room w/ access to large, covered patio. The primary bedroom showcases a luxurious ensuite w/ fully tiled shower, 2 vanities, make-up station, W/C, & 2 generous closets. An office w/ built-in desk and cabinets, a guest room w/ window seating & built-in wardrobes, and a spacious craft/media room or 3rd bedroom. Workshop in garage, 6' central crawl, gas furnace, heat pump, tile roof.



1942 Crown Isle Drive | Listed at \$1,450,000

MLS #: 941882 | 3 Bedrooms | 3 Bathrooms

Total SqFt: 2,416

Garages: 2

Lot Size: 0.23 acres

Year Built: 2018

Zoning: CD-1H

Please use the link below for more information:

www.janedenham.com



c 250.898.1220
jane@janedenham.com
www.janedenham.com

Grace Denham-Clare
c 250.897.8890
grace@janedenham.com



RE/MAX[®]

ocean pacific realty

Each Office Independently Owned and Operated

b 250.339.2021
tf 888.829.7205
282 Anderton Rd.
Comox BC V9M 1Y2