

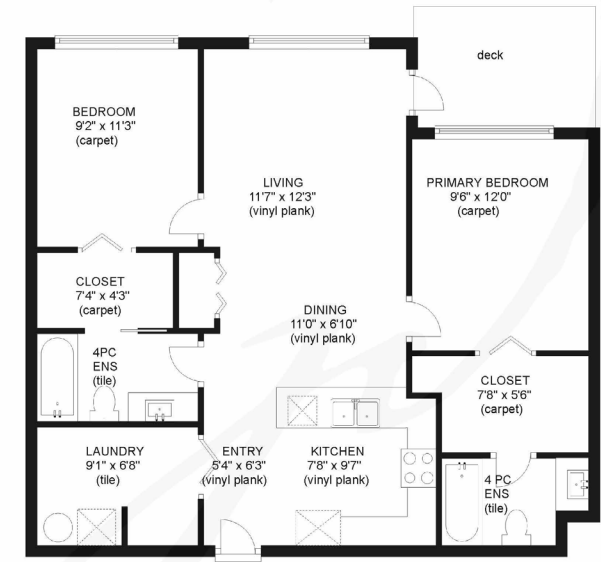
jane denham
REAL ESTATE GROUP



509-3070 Kilpatrick Ave

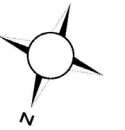


509 - 3070 KILPATRICK AVENUE



MAIN: 876 sq. ft.
Ceiling height: 8'10"

Measurements on the plans are intended for visual reference purposes only and should be verified.



Meticulously Maintained...

Meticulously maintained, built in 2019, this fabulous Newport Village Penthouse is located on the quiet side boasting bright southern exposure. With 876 sf, 2 BD/ 2 BA, this floor plan offers great separation with a bedroom and ensuite on each side of the condo for a little peace and privacy. Close to 9' ceilings add to the spacious layout with large picture windows and French door access to the covered deck, ideal for a relaxing morning in the sunshine. Contemporary finishings with quartz counters and vinyl plank flooring, well designed kitchen with s/s appliances, abundant workspace and seating at the counter, great for entertaining or a quick bite! Lots of storage with laundry room and stacking washer/dryer. Shared amenities include common room with kitchen, bike storage, EV charging stations. There are 2 parking spaces, 1 secure underground and 1 by the front door. An easy walk to shops, restaurants, walkways, trails, and the bus route. Move-in ready, quick possession available!



jane
denham
REAL ESTATE GROUP

509-3070 Kilpatrick Avenue | Listed at \$469,000

MLS #: 949656 | 2 Bedrooms | 2 Bathrooms

Total SqFt: 876

Parking Spots: 2

Year Built: 2019

Strata Fees: \$331 /m

Please use the link below for more information:

www.janedenham.com



c 250.898.1220
jane@janedenham.com
www.janedenham.com

Grace Denham-Clare
c 250.897.8890
grace@janedenham.com



RE/MAX[®]

ocean pacific realty

Each Office Independently Owned and Operated

b 250.339.2021
tf 888.829.7205
282 Anderton Rd.
Comox BC V9M 1Y2