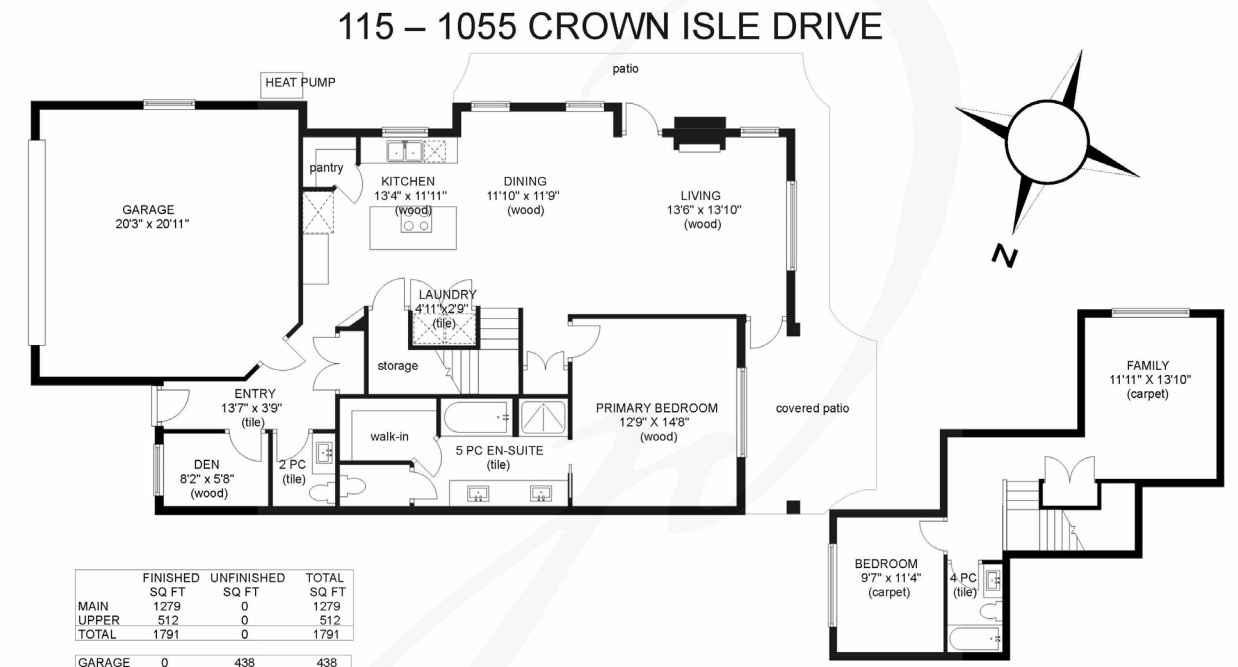


jane denham
REAL ESTATE GROUP



115-1055 Crown Isle Drive



Premier townhome at the Timbers...

Premier townhome at the Timbers in Crown Isle! Built by Monterra with a reputation for high end luxurious finishing. A short stroll to Thrifty's shopping, Starbucks, Costco, Crown Isle clubhouse and the new Hospital. Traditional styling w/ open concept floor plan, 1,791 sf, 2 BD/ 3 BA, w/ primary bedroom on main floor, & upstairs a family room w/ spectacular south mountain views & guest bedroom. Stunning kitchen w/ Ivory cabinets, granite countertops, island w/ JennAir gas range, Fisher Paykel fridge, KitchenAid dishwasher 2023, & full pantry. Ideal for entertaining, this spacious great room showcases 9' ceilings, wire brushed wood flooring, gas fireplace & easy access to a private, covered SW patio w/ BBQ hookup for evening cocktails, & patio w/ SE sun exposure, perfect for morning coffee. Primary suite w/ wood flooring throughout, a luxurious 5 pce ensuite w/ W/C, & walk-in closet. Front den features maple built-in desk/cabinetry. Heat pump, H/W on demand, Tile roof, Dbl garage.



115-1055 Crown Isle Drive | Listed at \$925,000

MLS #: 955381 | 2 Bedrooms | 3 Bathrooms

Total SqFt: 1,791
Garages: 2
Strata Fees: \$658 /mo
Year Built: 2011
Zoning: CD-1B

Please use the link below for more information:

www.janedenham.com



c 250.898.1220
jane@janedenham.com
www.janedenham.com

Grace Denham-Clare
c 250.897.8890
grace@janedenham.com



RE/MAX[®]

ocean pacific realty

Each Office Independently Owned and Operated

b 250.339.2021
tf 888.829.7205
282 Anderton Rd.
Comox BC V9M 1Y2