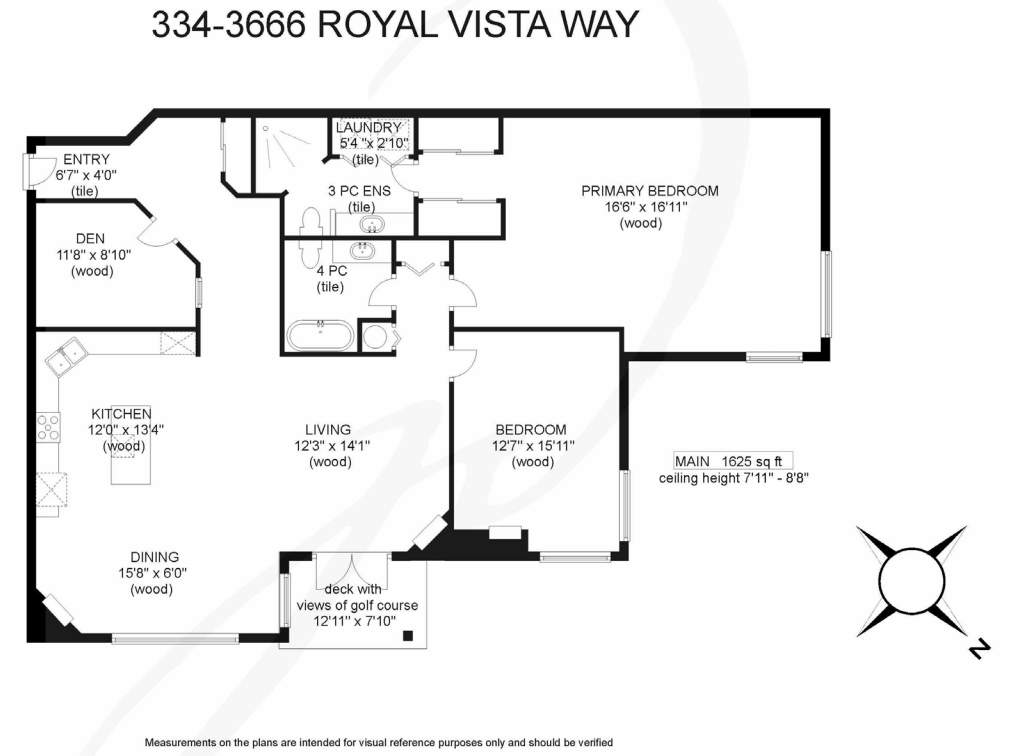


jane denham
REAL ESTATE GROUP



334-3666 Royal Vista Way



Premier Condo at Corinthia Estates...

Premier condo, 1,625 sf, 2 BD/ 2 BA plus den, at Corinthia Estates in Crown Isle! Extraordinary upgrades, fantastic location, this 3rd floor corner unit showcases spectacular sunrise and golf course views across the ponds, and the 3rd, 4th & 5th fairways. Stunning kitchen w/ upgraded custom cabinetry, sublime Thermadore appliances, 36" 6 burner gas cooktop, double oven, custom paneled fridge for a streamlined elegant look, Miele dishwasher, wine cooler, granite counters, a large central island. The living & dining room open plan offer the warmth and ambience of 2 gas fireplaces, fabulous views & French door access to the covered deck. Private den, and media/2nd bedroom offer gas fireplace and corner windows w/ full views. Spacious primary suite offers a sanctuary to relax and unwind, ensuite w/ fully tiled shower, heated floors, and laundry closet. Gleaming oak hardwood flooring throughout, secure underground parking, triple storage locker, 1 dog or 1 cat, no smoking on property.



334-3666 Royal Vista Way | Listed at \$825,000

MLS #: 961674 | 2 Bedrooms | 2 Bathrooms

Total SqFt: 1,625
Parking: 1
Strata Fee: \$570 /mo
Year Built: 2006
Zoning: CD-1B

Please use the link below for more information:

www.janedenham.com



c 250.898.1220
jane@janedenham.com
www.janedenham.com

Grace Denham-Clare
c 250.897.8890
grace@janedenham.com



RE/MAX[®]

ocean pacific realty

Each Office Independently Owned and Operated

b 250.339.2021
tf 888.829.7205
282 Anderton Rd.
Comox BC V9M 1Y2